

# Heart Start: Toitoti Manawa

## Module links to health and physical education in The New Zealand Curriculum (MOE, 2007)

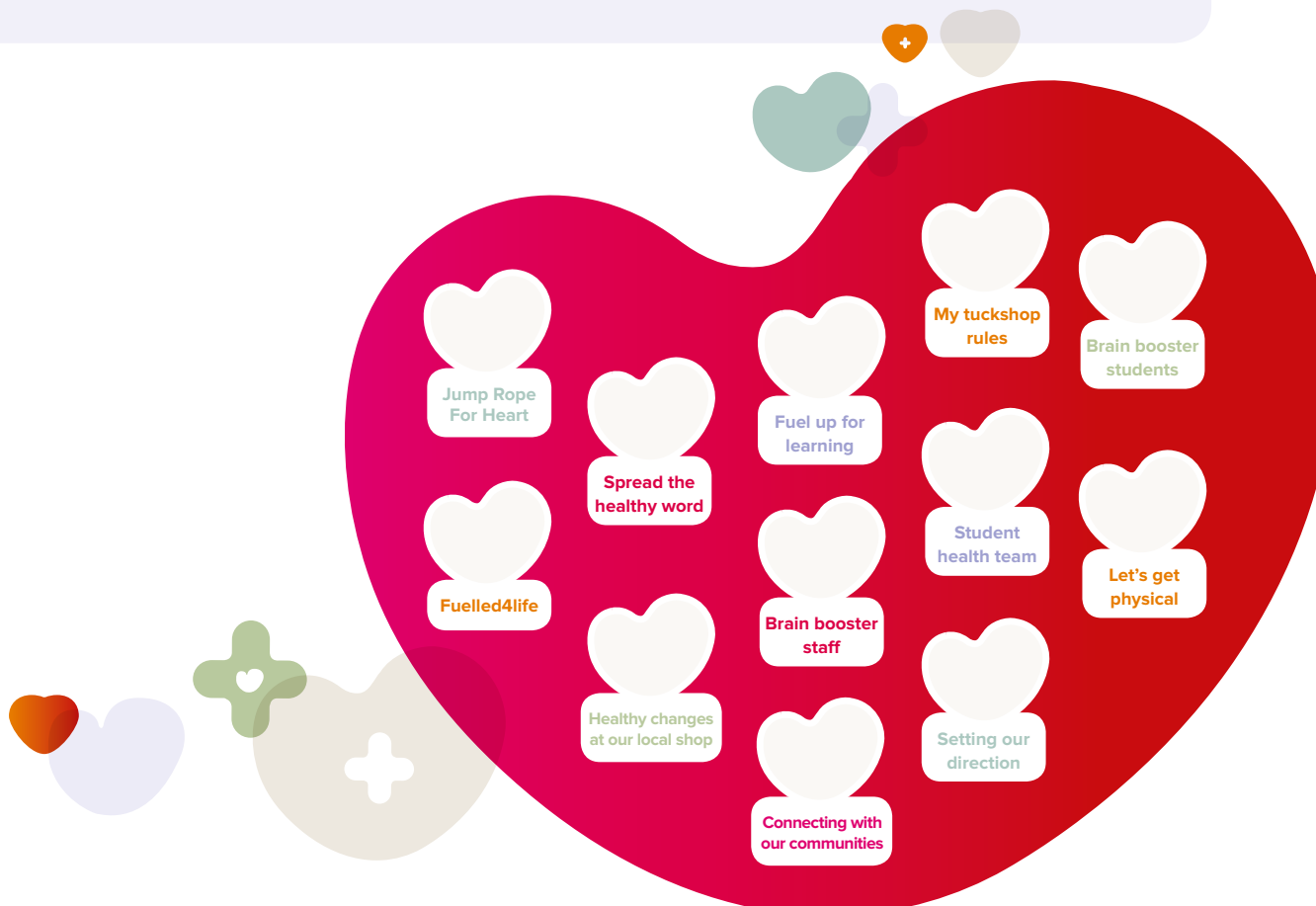
The following possible curriculum links are suggestions only and will be determined by the learning opportunities teachers choose to provide learners within the Heart Start modules. Careful consideration of learners' strengths and needs will support selection and the development of specific learning goals through implementation of effective pedagogy.

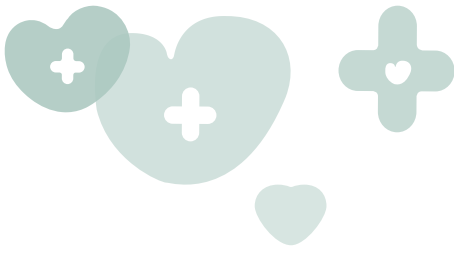
Connections to the NZC's vision, principles, values, key competencies, and other learning areas will require reflection on school visions for health and physical education and those explicitly included in learning opportunities provided.

Teachers may be able to use aspects of these modules as potential evidence to support assessment judgements for student achievement of National Standards.

N.B. Curriculum links for the module: 'Brain booster – students' are listed in the Heart Foundation unit plans for curriculum levels 1–4.

Please note the links listed in blue are subject to change.





# 1. Module

## Setting our direction

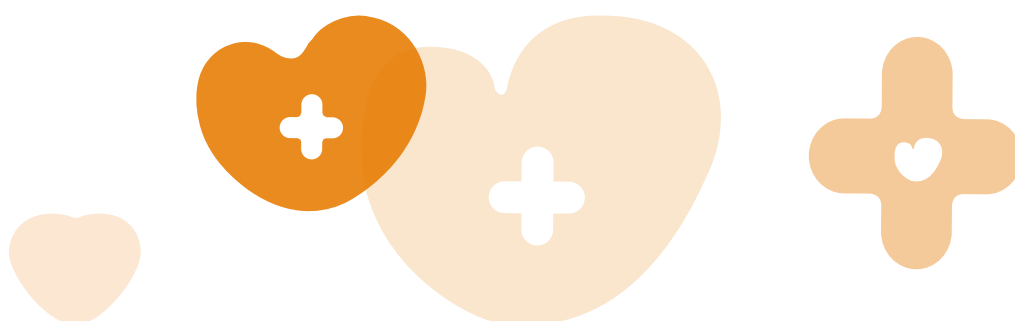
Key area/s of learning	Underlying concepts	Possible achievement objectives
<p><b>Food and Nutrition:</b>  <a href="http://health.tki.org.nz/Teaching-in-HPE/Curriculum-statement/Key-areas-of-learning/Food-and-Nutrition">http://health.tki.org.nz/Teaching-in-HPE/Curriculum-statement/Key-areas-of-learning/Food-and-Nutrition</a>            to identify specific aspects</p> <p><b>Physical Activity:</b>  <a href="http://health.tki.org.nz/Teaching-in-HPE/Curriculum-statement/Key-areas-of-learning/Physical-Activity">http://health.tki.org.nz/Teaching-in-HPE/Curriculum-statement/Key-areas-of-learning/Physical-Activity</a>            to identify specific aspects</p>	<p><b>Health Promotion:</b>  <a href="http://health.tki.org.nz/Teaching-in-HPE/Curriculum-statement/Underlying-concepts/Health-promotion">http://health.tki.org.nz/Teaching-in-HPE/Curriculum-statement/Underlying-concepts/Health-promotion</a>            to identify specific aspects</p> <p><b>Socio-ecological perspective:</b>  <a href="http://health.tki.org.nz/Teaching-in-HPE/Curriculum-statement/Underlying-concepts/The-Socio-ecological-perspective">http://health.tki.org.nz/Teaching-in-HPE/Curriculum-statement/Underlying-concepts/The-Socio-ecological-perspective</a>            to identify specific aspects</p>	<p><b>Level 1:</b>  <b>Healthy Communities and Environments – Rights, responsibilities, and laws; People and the environment</b>            Students will take individual and collective action to contribute to environments that can be enjoyed by all.</p> <p><b>Level 2:</b>  <b>Healthy Communities and Environments – Rights, responsibilities, and laws; People and the environment</b>            Students will contribute to and use simple guidelines and practices that promote physically and socially healthy classrooms, schools, and local environments.</p> <p><b>Level 3:</b>  <b>Healthy Communities and Environments – Societal attitudes and values; Rights, responsibilities, and laws</b>            Students will identify how health care and physical activity practices are influenced by community and environmental factors.            Students will research and describe current health and safety guidelines and practices in their schools and take action to enhance their effectiveness.</p> <p><b>Level 4:</b>  <b>Personal Health and Physical Development – Regular physical activity</b>            Students will demonstrate an increasing sense of responsibility for incorporating regular and enjoyable physical activity into their personal lifestyle to enhance well-being.</p>





## 2. Module Spread the healthy word

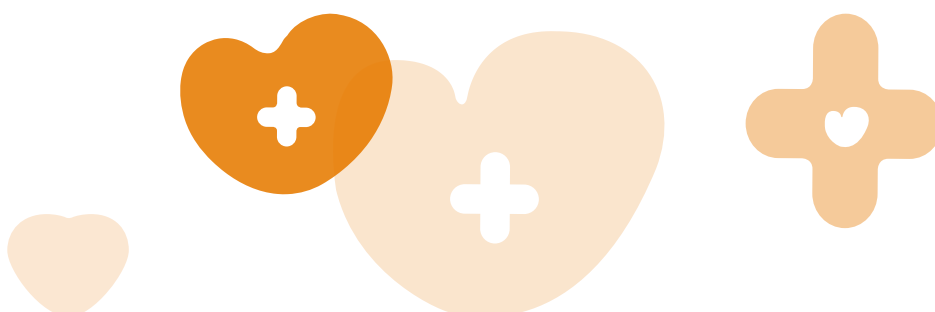
Key area/s of learning	Underlying concepts	Possible achievement objectives
<p><b>Food and Nutrition:</b>  <a href="http://health.tki.org.nz/Teaching-in-HPE/Curriculum-statement/Key-areas-of-learning/Food-and-Nutrition">http://health.tki.org.nz/Teaching-in-HPE/Curriculum-statement/Key-areas-of-learning/Food-and-Nutrition</a>            to identify specific aspects</p> <p><b>Physical Activity:</b>  <a href="http://health.tki.org.nz/Teaching-in-HPE/Curriculum-statement/Key-areas-of-learning/Physical-Activity">http://health.tki.org.nz/Teaching-in-HPE/Curriculum-statement/Key-areas-of-learning/Physical-Activity</a>            to identify specific aspects</p>	<p><a href="http://health.tki.org.nz/Teaching-in-HPE/Curriculum-statement/Underlying-concepts/Well-being-hauora">http://health.tki.org.nz/Teaching-in-HPE/Curriculum-statement/Underlying-concepts/Well-being-hauora</a></p> <p><a href="http://health.tki.org.nz/Teaching-in-HPE/Curriculum-statement/Underlying-concepts/The-Socio-ecological-perspective">http://health.tki.org.nz/Teaching-in-HPE/Curriculum-statement/Underlying-concepts/The-Socio-ecological-perspective</a></p> <p><b>Health Promotion:</b>  <a href="http://health.tki.org.nz/Teaching-in-HPE/Curriculum-statement/Underlying-concepts/Health-promotion">http://health.tki.org.nz/Teaching-in-HPE/Curriculum-statement/Underlying-concepts/Health-promotion</a></p> <p><a href="http://health.tki.org.nz/Teaching-in-HPE/Curriculum-statement/Underlying-concepts/Attitudes-and-values">http://health.tki.org.nz/Teaching-in-HPE/Curriculum-statement/Underlying-concepts/Attitudes-and-values</a></p>	<p><b>Level 1:</b></p> <p><b>Personal Health and Physical Development – Regular physical activity</b>            Students will participate in creative and regular physical activities and identify enjoyable experiences.</p> <p><b>Relationships with Other People – Interpersonal skills</b>            Student will express their own ideas, needs, wants, and feelings clearly and listen to those of other people.</p> <p><b>Healthy Communities and Environments – Rights, responsibilities, and laws; People and the environment</b>            Students will take individual and collective action to contribute to environments that can be enjoyed by all.</p> <p><b>Level 2:</b></p> <p><b>Personal Health and Physical Development – Regular physical activity</b>            Students will experience creative, regular and enjoyable physical activities and describe the benefits to well-being.</p> <p><b>Relationships with Other People – Interpersonal skills</b>            Student will express their own ideas, needs, wants, and feelings appropriately and listen sensitively to those of other people and affirm them.</p> <p><b>Healthy Communities and Environments – Community resources</b>            Students will identify and use local community resources and explain how these contribute to a healthy community.</p>

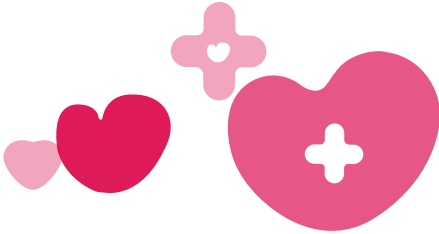




## 2. Module Spread the healthy word

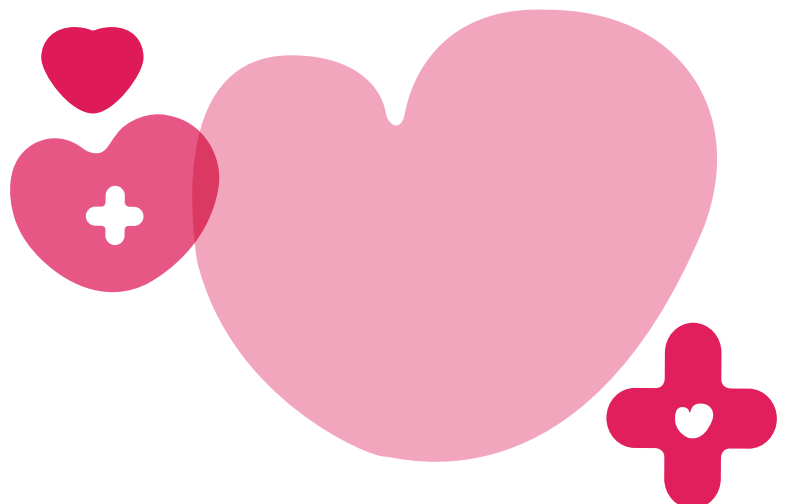
Key area/s of learning	Underlying concepts	Possible achievement objectives
<p><b>Food and Nutrition:</b>  <a href="http://health.tki.org.nz/Teaching-in-HPE/Curriculum-statement/Key-areas-of-learning/Food-and-Nutrition">http://health.tki.org.nz/Teaching-in-HPE/Curriculum-statement/Key-areas-of-learning/Food-and-Nutrition</a>            to identify specific aspects</p> <p><b>Physical Activity:</b>  <a href="http://health.tki.org.nz/Teaching-in-HPE/Curriculum-statement/Key-areas-of-learning/Physical-Activity">http://health.tki.org.nz/Teaching-in-HPE/Curriculum-statement/Key-areas-of-learning/Physical-Activity</a>            to identify specific aspects</p>	<p><a href="http://health.tki.org.nz/Teaching-in-HPE/Curriculum-statement/Underlying-concepts/Well-being-hauora">http://health.tki.org.nz/Teaching-in-HPE/Curriculum-statement/Underlying-concepts/Well-being-hauora</a></p> <p><a href="http://health.tki.org.nz/Teaching-in-HPE/Curriculum-statement/Underlying-concepts/The-Socio-ecological-perspective">http://health.tki.org.nz/Teaching-in-HPE/Curriculum-statement/Underlying-concepts/The-Socio-ecological-perspective</a></p> <p><b>Health Promotion:</b>  <a href="http://health.tki.org.nz/Teaching-in-HPE/Curriculum-statement/Underlying-concepts/Health-promotion">http://health.tki.org.nz/Teaching-in-HPE/Curriculum-statement/Underlying-concepts/Health-promotion</a></p> <p><a href="http://health.tki.org.nz/Teaching-in-HPE/Curriculum-statement/Underlying-concepts/Attitudes-and-values">http://health.tki.org.nz/Teaching-in-HPE/Curriculum-statement/Underlying-concepts/Attitudes-and-values</a></p>	<p><b>Level 3:</b></p> <p><b>Personal Health and Physical Development – Regular physical activity</b></p> <p>Students will maintain regular participation in enjoyable physical activities in a range of environments and describe how these assist in the promotion of well-being.</p> <p><b>Healthy Communities and Environments – Societal attitudes and values; Community resources</b></p> <p>Students will identify how health care and physical activity practices are influenced by community and environmental factors.</p> <p>Students will participate in communal events and describe how such events enhance the well-being of the community.</p> <p><b>Level 4:</b></p> <p><b>Personal Health and Physical Development – Regular physical activity</b></p> <p>Students will demonstrate an increasing sense of responsibility for incorporating regular and enjoyable physical activity into their personal lifestyle to enhance well-being.</p> <p><b>Healthy Communities and Environments – Community resources</b></p> <p>Investigate and/or access a range of community resources that support well-being and evaluate the contribution made by each to the well-being of community members.</p>

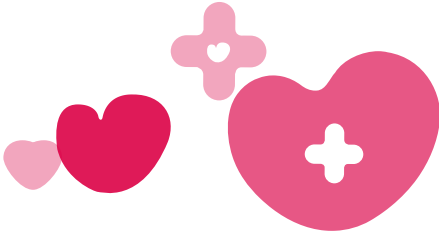




## 3. Module My tuckshop rules

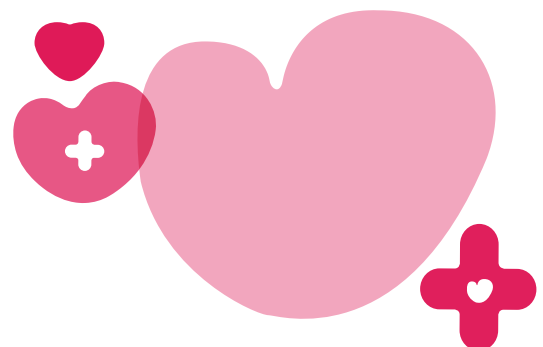
Key area/s of learning	Underlying concepts	Possible achievement objectives
<p><b>Food and Nutrition:</b>  <a href="http://health.tki.org.nz/Teaching-in-HPE/Curriculum-statement/Key-areas-of-learning/Food-and-Nutrition">http://health.tki.org.nz/Teaching-in-HPE/Curriculum-statement/Key-areas-of-learning/Food-and-Nutrition</a>            to identify specific aspects</p> <p><b>Physical Activity:</b>  <a href="http://health.tki.org.nz/Teaching-in-HPE/Curriculum-statement/Key-areas-of-learning/Physical-Activity">http://health.tki.org.nz/Teaching-in-HPE/Curriculum-statement/Key-areas-of-learning/Physical-Activity</a>            to identify specific aspects</p>	<p><b>Health Promotion:</b>  <a href="http://health.tki.org.nz/Teaching-in-HPE/Curriculum-statement/Underlying-concepts/Health-promotion">http://health.tki.org.nz/Teaching-in-HPE/Curriculum-statement/Underlying-concepts/Health-promotion</a></p> <p><a href="http://health.tki.org.nz/Teaching-in-HPE/Curriculum-statement/Underlying-concepts/Attitudes-and-values">http://health.tki.org.nz/Teaching-in-HPE/Curriculum-statement/Underlying-concepts/Attitudes-and-values</a></p>	<p><b>Level 1:</b></p> <p><b>Relationships with Other People – Interpersonal skills</b></p> <p>Student will express their own ideas, needs, wants, and feelings clearly and listen to those of other people.</p> <p><b>Healthy Communities and Environments – Rights, responsibilities, and laws; People and the environment</b></p> <p>Students will take individual and collective action to contribute to environments that can be enjoyed by all.</p> <p><b>Level 2:</b></p> <p><b>Relationships with Other People – Interpersonal skills</b></p> <p>Student will express their own ideas, needs, wants, and feelings appropriately and listen sensitively to those of other people and affirm them.</p> <p><b>Healthy Communities and Environments – Community resources</b></p> <p>Students will identify and use local community resources and explain how these contribute to a healthy community.</p>





## 3. Module My tuckshop rules

Key area/s of learning	Underlying concepts	Possible achievement objectives
<p><b>Food and Nutrition:</b>  <a href="http://health.tki.org.nz/Teaching-in-HPE/Curriculum-statement/Key-areas-of-learning/Food-and-Nutrition">http://health.tki.org.nz/Teaching-in-HPE/Curriculum-statement/Key-areas-of-learning/Food-and-Nutrition</a>            to identify specific aspects</p> <p><b>Physical Activity:</b>  <a href="http://health.tki.org.nz/Teaching-in-HPE/Curriculum-statement/Key-areas-of-learning/Physical-Activity">http://health.tki.org.nz/Teaching-in-HPE/Curriculum-statement/Key-areas-of-learning/Physical-Activity</a>            to identify specific aspects</p>	<p><b>Health Promotion:</b>  <a href="http://health.tki.org.nz/Teaching-in-HPE/Curriculum-statement/Underlying-concepts/Health-promotion">http://health.tki.org.nz/Teaching-in-HPE/Curriculum-statement/Underlying-concepts/Health-promotion</a></p> <p><a href="http://health.tki.org.nz/Teaching-in-HPE/Curriculum-statement/Underlying-concepts/Attitudes-and-values">http://health.tki.org.nz/Teaching-in-HPE/Curriculum-statement/Underlying-concepts/Attitudes-and-values</a></p>	<p><b>Level 3:</b>  <b>Healthy Communities and Environments – Rights, responsibilities, and laws; People and the environment</b></p> <p>Students will research and describe current health and safety practices in their school and take action to enhance their effectiveness.</p> <p>Students will plan and implement a programmes to enhance an identified social or physical aspect of their classroom or school environment.</p> <p><b>Level 4:</b>  <b>Relationships with Other People – Relationships, Interpersonal skills</b></p> <p>Students will identify the effects of changing situations, roles, and responsibilities on relationships and describe appropriate responses.</p> <p>Students will describe and demonstrate a range of assertive communication skills and processes that enable them to interact appropriately with other people.</p> <p><b>Healthy Communities and Environments – Community resources; Rights, responsibilities, and laws; People and the environment</b></p> <p>Students will investigate and/or access a range of community resources that support well-being and evaluate the contribution made by each to the well-being of community members.</p> <p>Students will specify individual responsibilities and take collective action for the care and safety of other people in their school and in the wider community.</p>





## 4. Module *Student health team*

Key area/s of learning	Underlying concepts	Possible achievement objectives
<p><b>Food and Nutrition:</b>  <a href="http://health.tki.org.nz/Teaching-in-HPE/Curriculum-statement/Key-areas-of-learning/Food-and-Nutrition">http://health.tki.org.nz/Teaching-in-HPE/Curriculum-statement/Key-areas-of-learning/Food-and-Nutrition</a>            to identify specific aspects</p> <p><b>Physical Activity:</b>  <a href="http://health.tki.org.nz/Teaching-in-HPE/Curriculum-statement/Key-areas-of-learning/Physical-Activity">http://health.tki.org.nz/Teaching-in-HPE/Curriculum-statement/Key-areas-of-learning/Physical-Activity</a>            to identify specific aspects</p>	<p><b>Health Promotion:</b>  <a href="http://health.tki.org.nz/Teaching-in-HPE/Curriculum-statement/Underlying-concepts/Health-promotion">http://health.tki.org.nz/Teaching-in-HPE/Curriculum-statement/Underlying-concepts/Health-promotion</a>  <a href="http://health.tki.org.nz/Teaching-in-HPE/Curriculum-statement/Underlying-concepts/Attitudes-and-values">http://health.tki.org.nz/Teaching-in-HPE/Curriculum-statement/Underlying-concepts/Attitudes-and-values</a></p>	<p><b>Level 1:</b></p> <p><b>Personal Health and Physical Development – Regular physical activity</b>            Students will participate in creative and regular physical activities and identify enjoyable experiences.</p> <p><b>Relationships with Other People – Interpersonal skills</b>            Students will express their own ideas, needs, wants, and feelings clearly and listen to those of other people.</p> <p><b>Healthy Communities and Environments – Rights, responsibilities, and laws; People and the environment</b>            Students will take individual and collective action to contribute to environments that can be enjoyed by all.</p> <p><b>Level 2:</b></p> <p><b>Personal Health and Physical Development – Regular physical activity</b>            Students will experience creative, regular and enjoyable physical activities and describe the benefits to well-being</p> <p><b>Relationships with Other People – Interpersonal skills</b>            Student will express their own ideas, needs, wants, and feelings appropriately and listen sensitively to those of other people and affirm them.</p> <p><b>Healthy Communities and Environments – Community resources</b>            Students will identify and use local community resources and explain how these contribute to a healthy community.</p>





## 4. Module *Student health team*

Key area/s of learning	Underlying concepts	Possible achievement objectives
<p><b>Food and Nutrition:</b>  <a href="http://health.tki.org.nz/Teaching-in-HPE/Curriculum-statement/Key-areas-of-learning/Food-and-Nutrition">http://health.tki.org.nz/Teaching-in-HPE/Curriculum-statement/Key-areas-of-learning/Food-and-Nutrition</a>            to identify specific aspects</p> <p><b>Physical Activity:</b>  <a href="http://health.tki.org.nz/Teaching-in-HPE/Curriculum-statement/Key-areas-of-learning/Physical-Activity">http://health.tki.org.nz/Teaching-in-HPE/Curriculum-statement/Key-areas-of-learning/Physical-Activity</a>            to identify specific aspects</p>	<p><b>Health Promotion:</b>  <a href="http://health.tki.org.nz/Teaching-in-HPE/Curriculum-statement/Underlying-concepts/Health-promotion">http://health.tki.org.nz/Teaching-in-HPE/Curriculum-statement/Underlying-concepts/Health-promotion</a>  <a href="http://health.tki.org.nz/Teaching-in-HPE/Curriculum-statement/Underlying-concepts/Attitudes-and-values">http://health.tki.org.nz/Teaching-in-HPE/Curriculum-statement/Underlying-concepts/Attitudes-and-values</a></p>	<p><b>Level 3:</b></p> <p><b>Personal Health and Physical Development – Regular physical activity</b></p> <p>Students will maintain regular participation in enjoyable physical activities in a range of environments and describe how these assist in the promotion of well-being.</p> <p><b>Healthy Communities and Environments – Societal attitudes and values; Community resources</b></p> <p>Students will identify how health care and physical activity practices are influenced by community and environmental factors.</p> <p>Students will participate in communal events and describe how such events enhance the well-being of the community.</p> <p><b>Level 4:</b></p> <p><b>Personal Health and Physical Development – Regular physical activity</b></p> <p>Students will demonstrate an increasing sense of responsibility for incorporating regular and enjoyable physical activity into their personal lifestyle to enhance well-being.</p> <p><b>Healthy Communities and Environments – Community resources</b></p> <p>Investigate and/or access a range of community resources that support well-being and evaluate the contribution made by each to the well-being of community members.</p>

